

45525

6651



PLAN VIEW

HORIZONTAL SCALE: 1 : 250

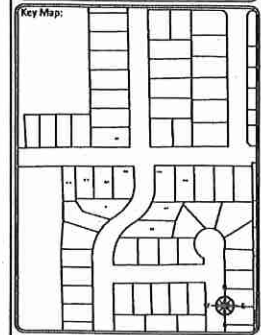
RECEIVED AND PROCESSED
BY LAND DEVELOPMENT
INITIALS: *[Signature]*
SEP 15 2017



NOTES:

500	INSTALL 664F FDH ON CONCRETE PAD WITH 2x ROLLARDS. SEE DETAIL 'C' SHEET 500
601	STUB 2-100mm DUCTS 0.5m ABOVE FINISHED GRADE
602	INSTALL (2) 100mm DBII PVC CONDUIT L=11.0m. SEE DETAIL 'B' SHEET 500
603	PLACE NEW 1102 SV AND CONNECT (2) 100mm DBII PVC CONDUITS TO WEST WALL. SEE DETAIL 'A' SHEET 500
604	CORE FOR 2-100mm CONDUITS IN PROPOSED SV-1102. SEE DETAIL 'A' SHEET 500
605	NEW 45° BEND 2-100mm DBII PVC CONDUIT

Sheet Title:
Design
Function:
Make ready
Task:
FDH Placement



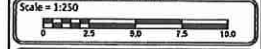
BE ONE CALL
CALL BEFORE YOU DIG
1-800-495-5859
OR BY WEBSITE
WWW.BEONECALL.COM
CALL AT LEAST TWO WEEKS BEFORE
STARTING YOUR PROJECT TO DIG

Client:
TELUS

Prepared By:
FAFL
SUITE 200 - 7485 130 ST
Surrey BC V3W 1H8

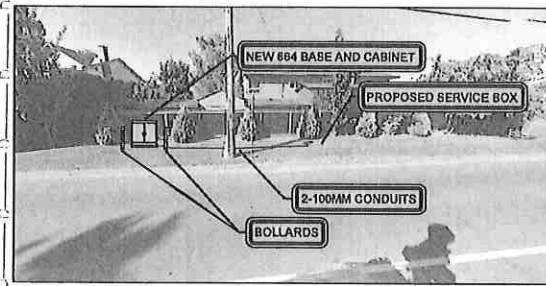
Rev	Date	Notes	QC
-	-	-	-
-	-	-	-
-	-	-	-
-	-	-	-
-	-	IFP: Sept 6 2017	-
DRAWN BY:		TARANA AHAMMED	
DESIGNED BY:		KADTEC SYSTEMS	

Proprietary Information
Not for disclosure except under written agreement



Project:
Falcon 2017
SRDS 1011A - 2626658
Sardis, BC

File Name:
SRDS 1011A - 2626658FDH
CID: SRDS Route: 1011A
Network Number: 2626658
Sheet Number: 600



6651 WILTSHIRE ST.
FDH - SITE PLAN
N.T.S.

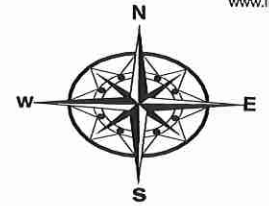
CAUTION:
GAS FACILITIES IN AREA
LOCATE AND EXPOSE
PRIOR TO COMMENCING WORK

METHOD OF PLACEMENT
VIA OPEN TRENCH UNLESS
OTHERWISE NOTED

LOCATE AND PROTECT ALL
OTHER UTILITIES IN FIELD

ALL MEASUREMENTS ARE IN
METERS UNLESS NOTED

EX. MH 128

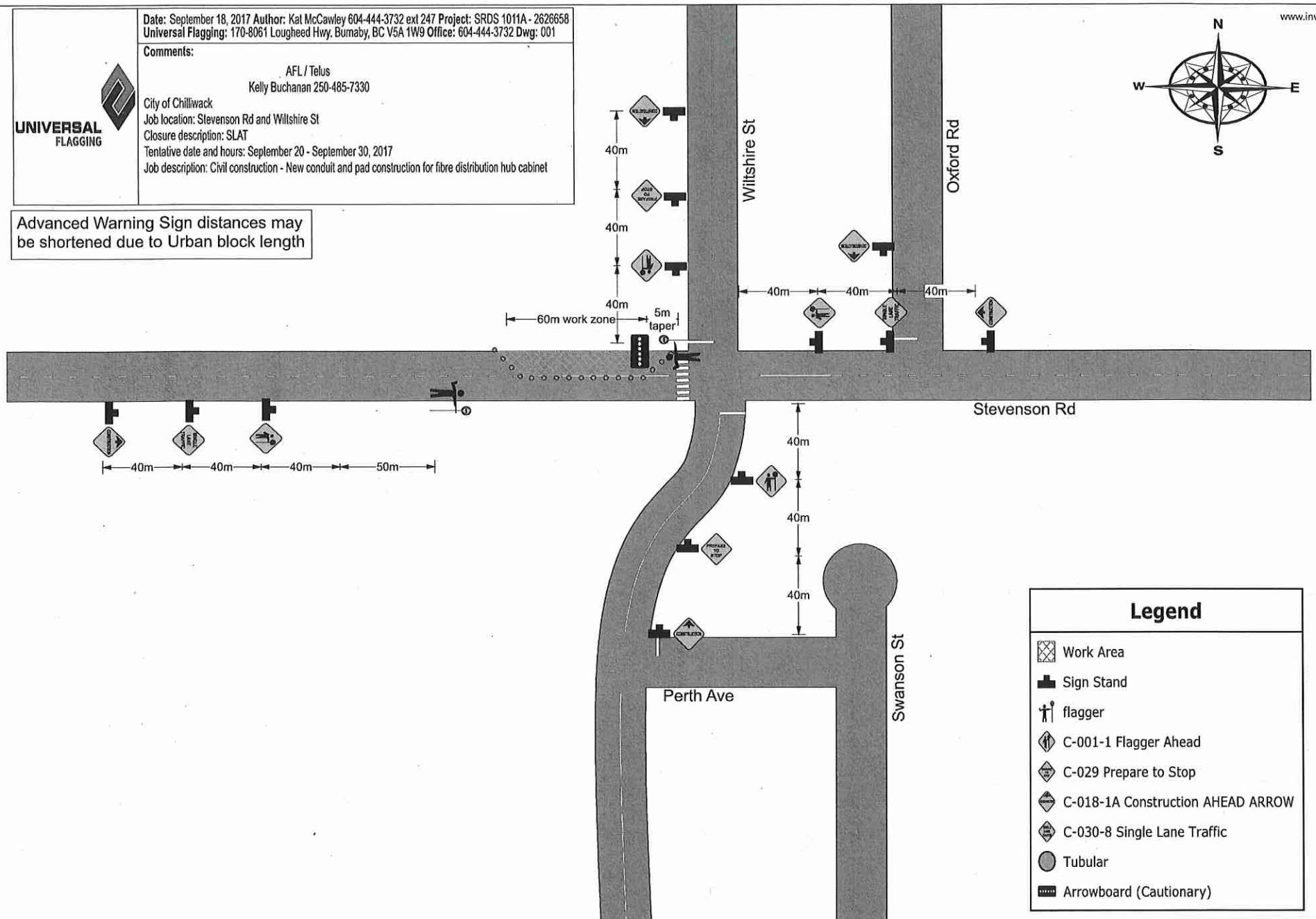


Date: September 18, 2017 Author: Kat McCawley 604-444-3732 ext 247 Project: SRDS 1011A - 2626658
 Universal Flagging: 170-8061 Lougheed Hwy, Burnaby, BC V5A 1W9 Office: 604-444-3732 Dwg: 001

Comments:

AFL / Telus
 Kelly Buchanan 250-485-7330
 City of Chilliwack
 Job location: Stevenson Rd and Wiltshire St
 Closure description: SLAT
 Tentative date and hours: September 20 - September 30, 2017
 Job description: Civil construction - New conduit and pad construction for fibre distribution hub cabinet

Advanced Warning Sign distances may be shortened due to Urban block length



Legend	
	Work Area
	Sign Stand
	flagger
	C-001-1 Flagger Ahead
	C-029 Prepare to Stop
	C-018-1A Construction AHEAD ARROW
	C-030-8 Single Lane Traffic
	Tubular
	Arrowboard (Cautionary)